



NDT

Navdeep Tools Private Limited

NDT group

...comprehensive supplier in stamping tooling industry

Company Profile

- **Established:** 2002
- **Annual Turnover:** 50 Cr
- **Managing Director:** Mr. V.P Dalal
- **Total Workforce:** Above 130
- **Expertise:**

<u>Operation</u>	<u>Industry</u>
1. Sheet metal Stamping	1. Automotive industry
2. Tooling	2. Two wheelers
3. Welding	3. White goods

• **Plants:**

Plant 1 (Manufacturing/Production unit)

Location: Sector 25, Krishna colony,
Faridabad
Area: 35000 sq ft
Workforce: 70 (15 staff + 55 labour)

Plant 2 (Tooling and high tensile precision stamping)

Location: Plot 787, Sec 69
IMT Faridabad
Area: 50000 sq ft
Workforce: 60 (25 staff + 35 labour)

Our Directors



V.P Dalal (Managing Director)

With immense experience spanning around **30 years** in tooling and seating parts, he is the guiding force behind Navdeep Tools. He closely inspects the design and process plan for each activity and gives **expert advice** in all critical situations. After working years towards the growth of company, he has now been joined by both his Sons as Directors.



Naveen Dalal (B.E mechanical and automation)

With knowledge from his mechanical degree and experience from 6 month training at NAGATA, he indeed brings a lot to NDT team. Despite getting admission to the prestigious IIMs ,he chose to pursue his father's business.



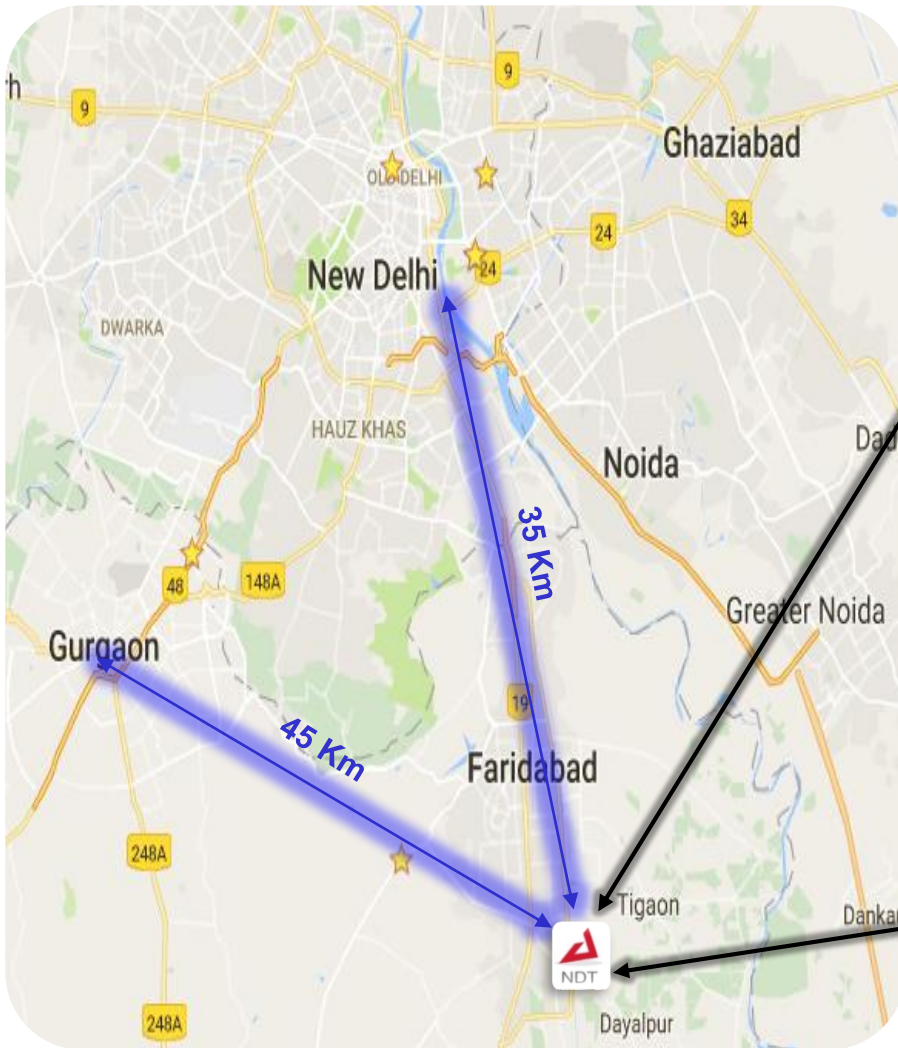
Deepak Dalal(B.E Mechanical)

After completing 6 months training at MSIL and 1 year at TATA Motors, he is all set to join NDT team. He will be heading the Gujarat Unit once its operational.

Factory Location

Navdeep Tools Pvt. Ltd.(IMT Faridabad)

- 1 hour distance from Gurgaon Industrial Sector (IMT Manesar).
- 55 mins distance from New Delhi International Airport.
- All industrial hubs and major cities Noida, Delhi, Gurgaon, Ghaziabad etc within 1 hour proximity.



Customer Base

OEMs



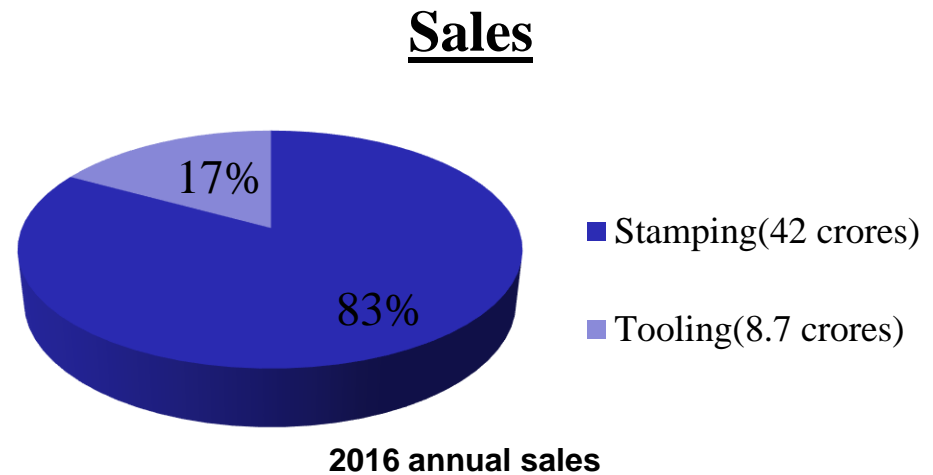
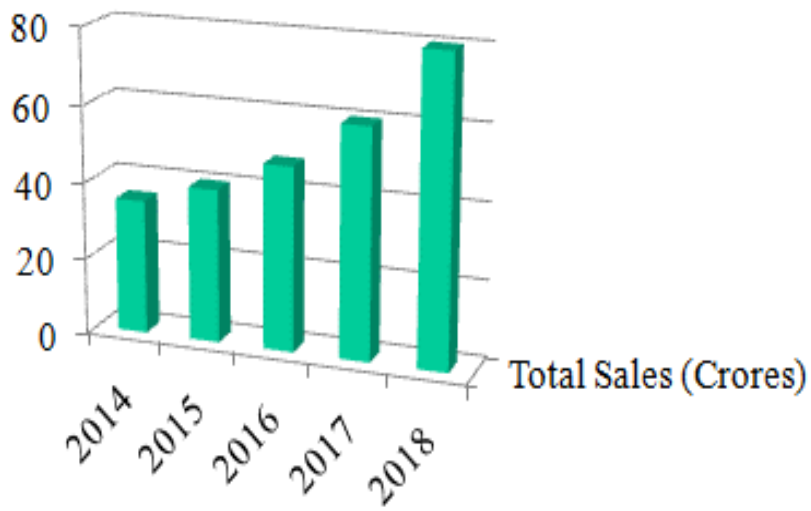
TIER-2



White Goods



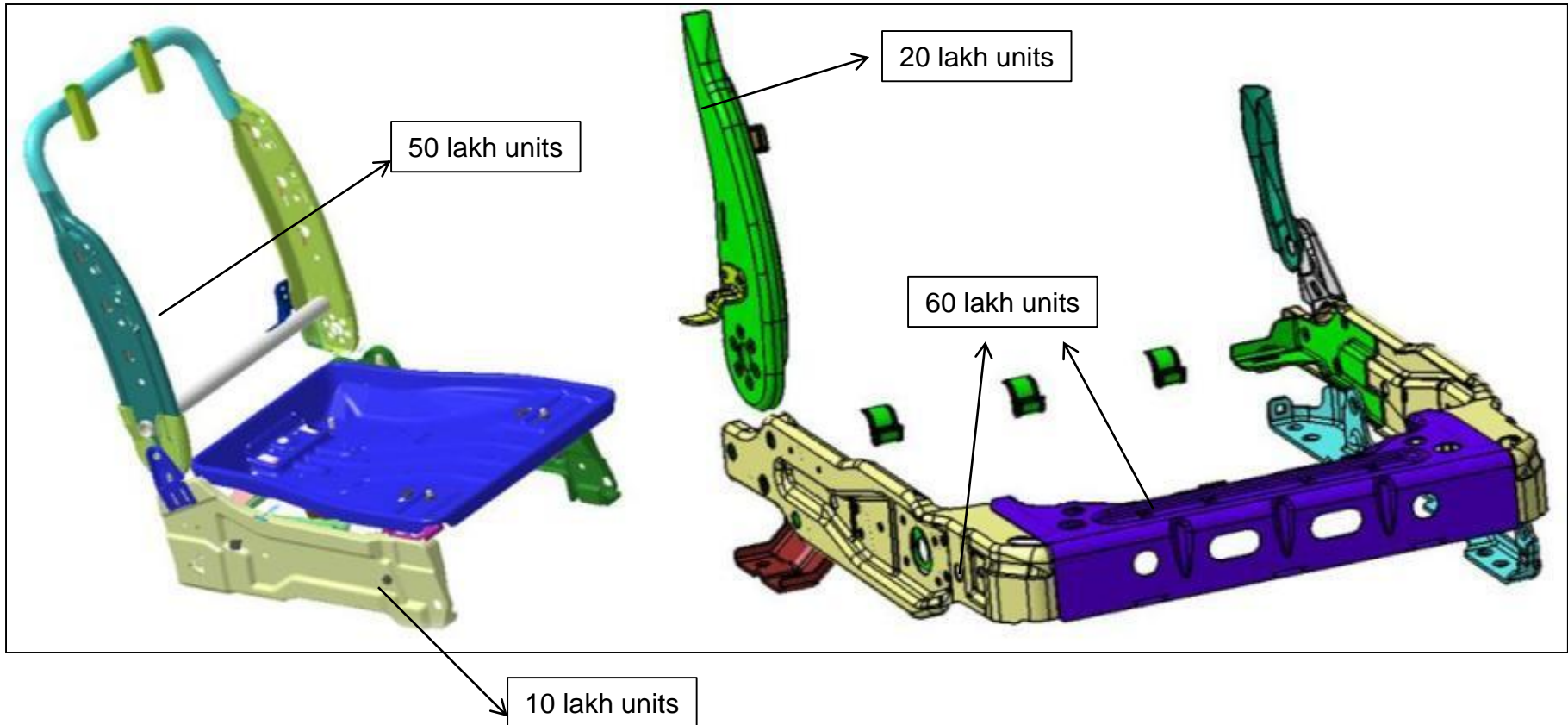
Sales Performance and Sales Objective



Seating (Stamping & Assembly)



FRONT SEAT MSIL ALL NEW MODEL (Swift, Ertiga, Celerio, Ritz, Wagon-R)

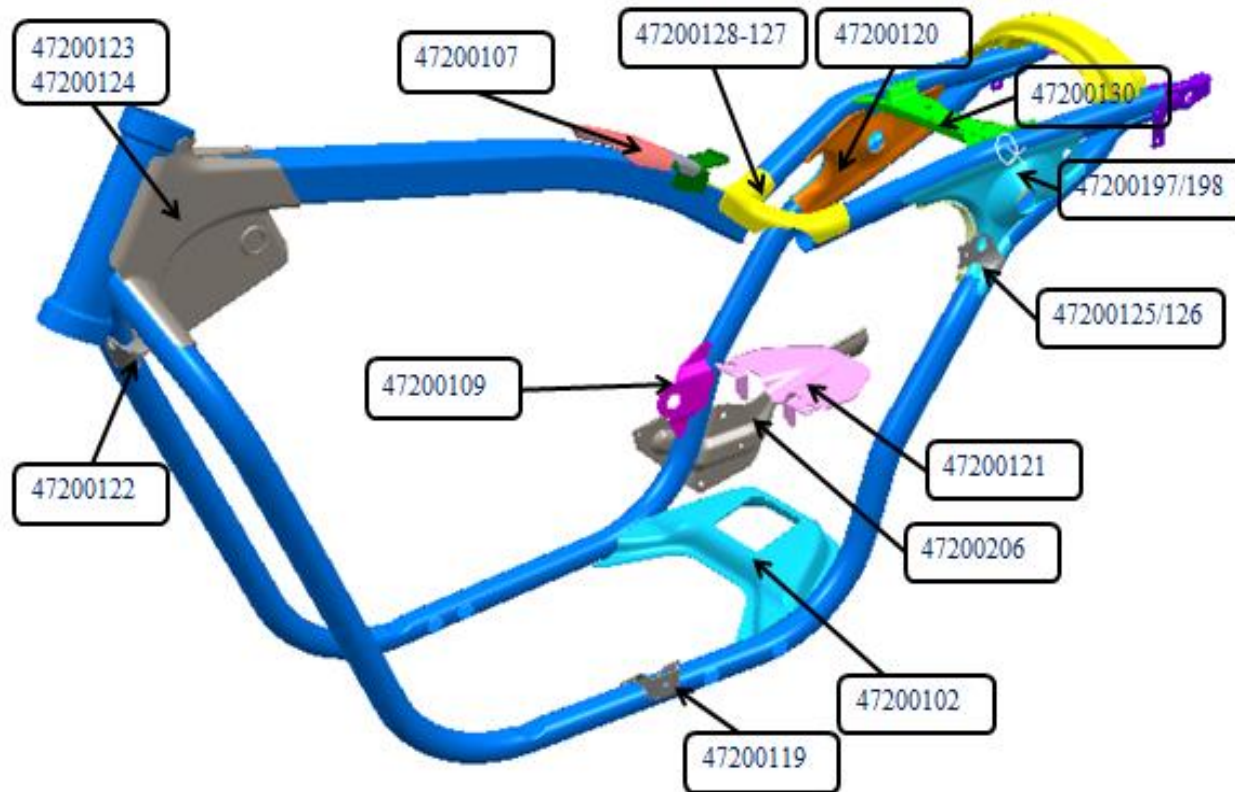


Wagon-R

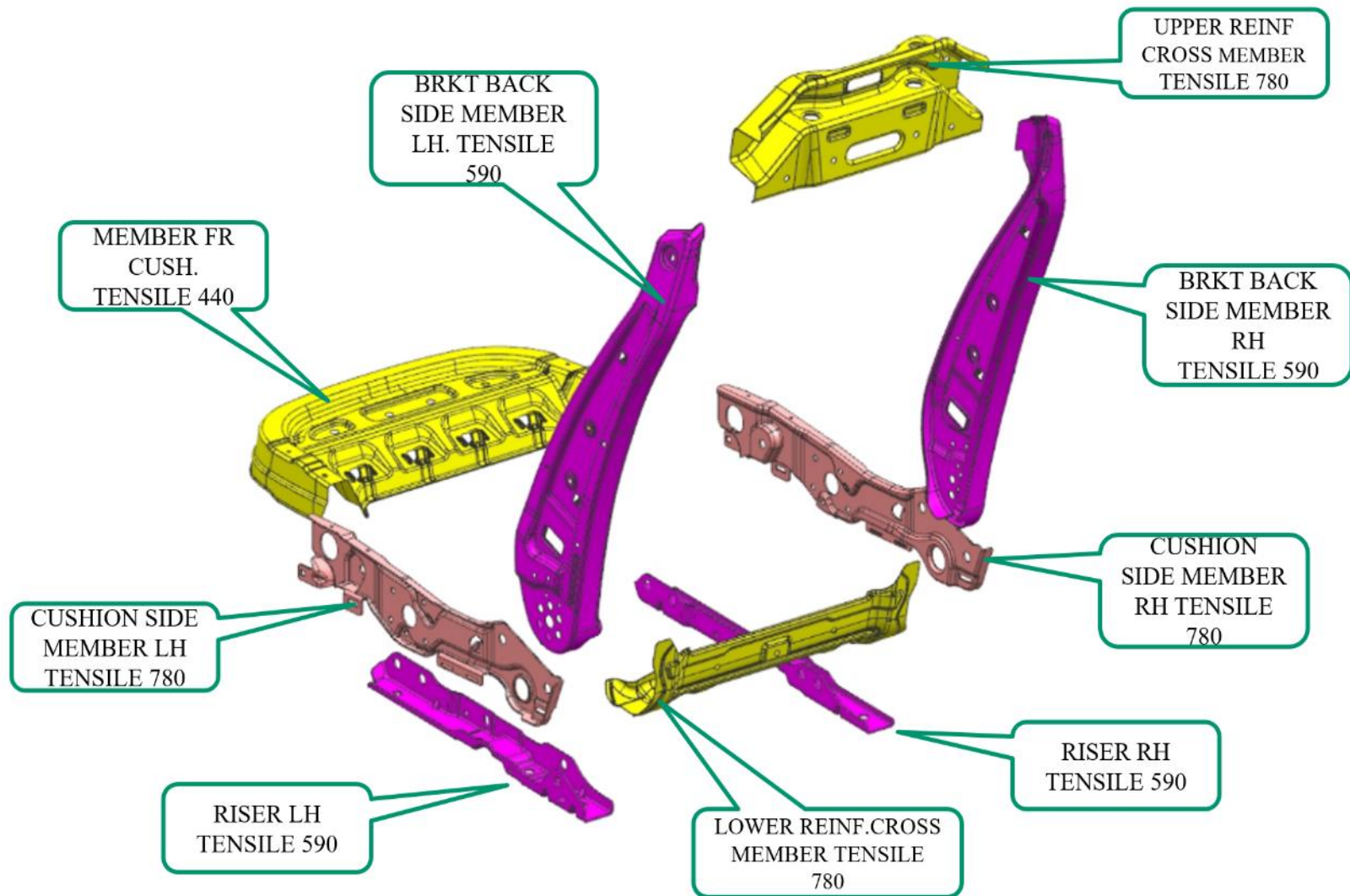
Swift, Ertiga, Celerio, Ritz



FRAME HARLEY-DAVIDSON

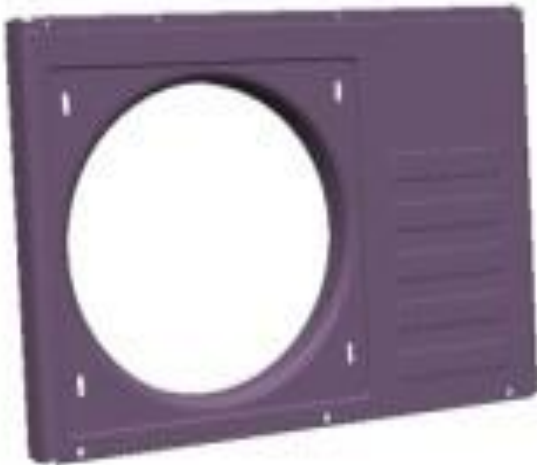


Mahindra S201 Front Seat



Main Products

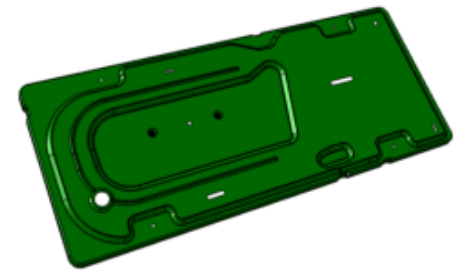
White Goods parts



FRONT PANEL



BASE PAN 1.5ton

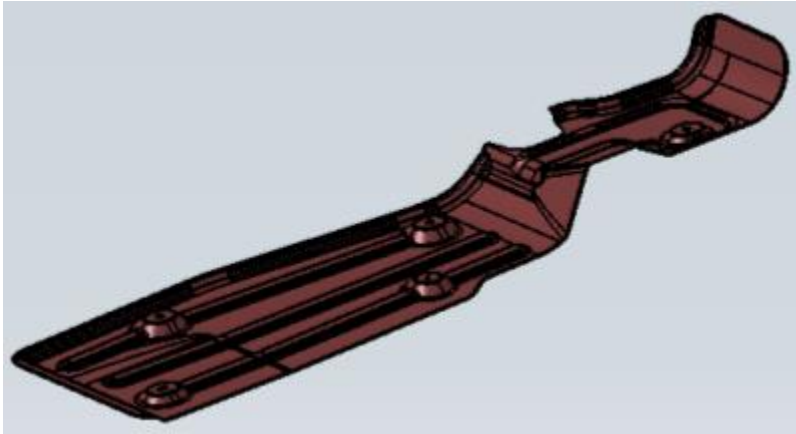


BASE PAN
2.0TOn

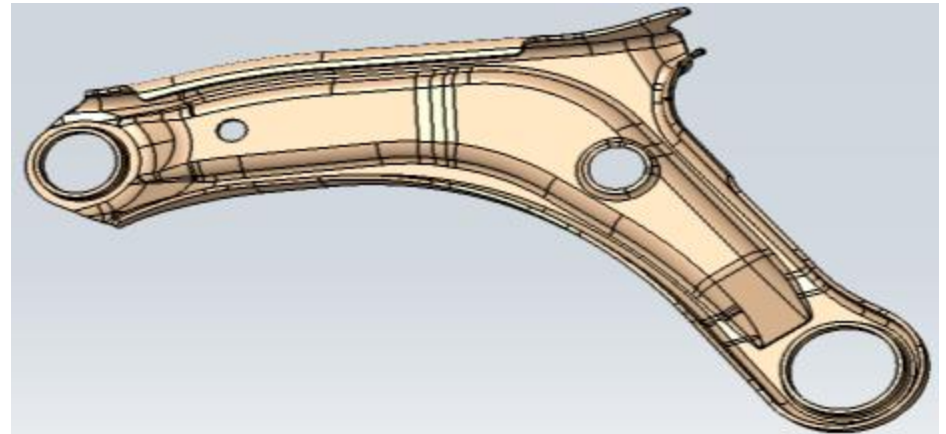


BARRIER

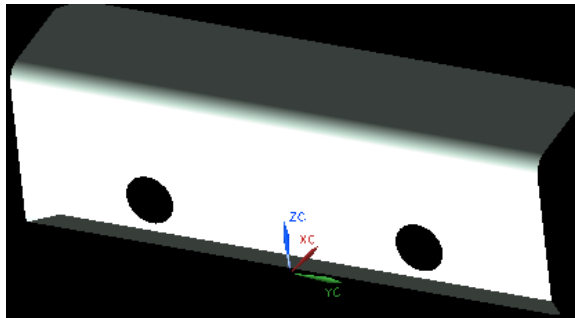
High tensile Products



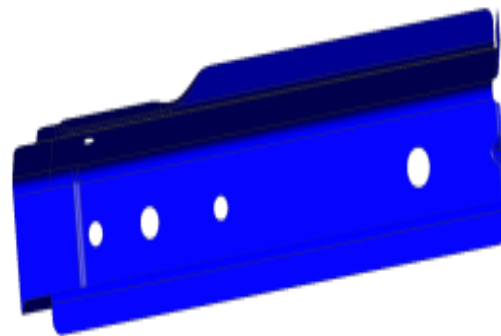
Heat shield Al coated (scratch and dent free part)



Control Arm LH / RH YAD 3.2 JSH 590 BN-P



Reinf. Jacking JAC 980 YN 45/45



EXTENTION RR FLR SIDE MBR
RR R/L JAC 590 RN 45/45



Control arm YRA 2.9
JSH 590 BN-P

Achievements



Plant at a glance



Front View



Production Line

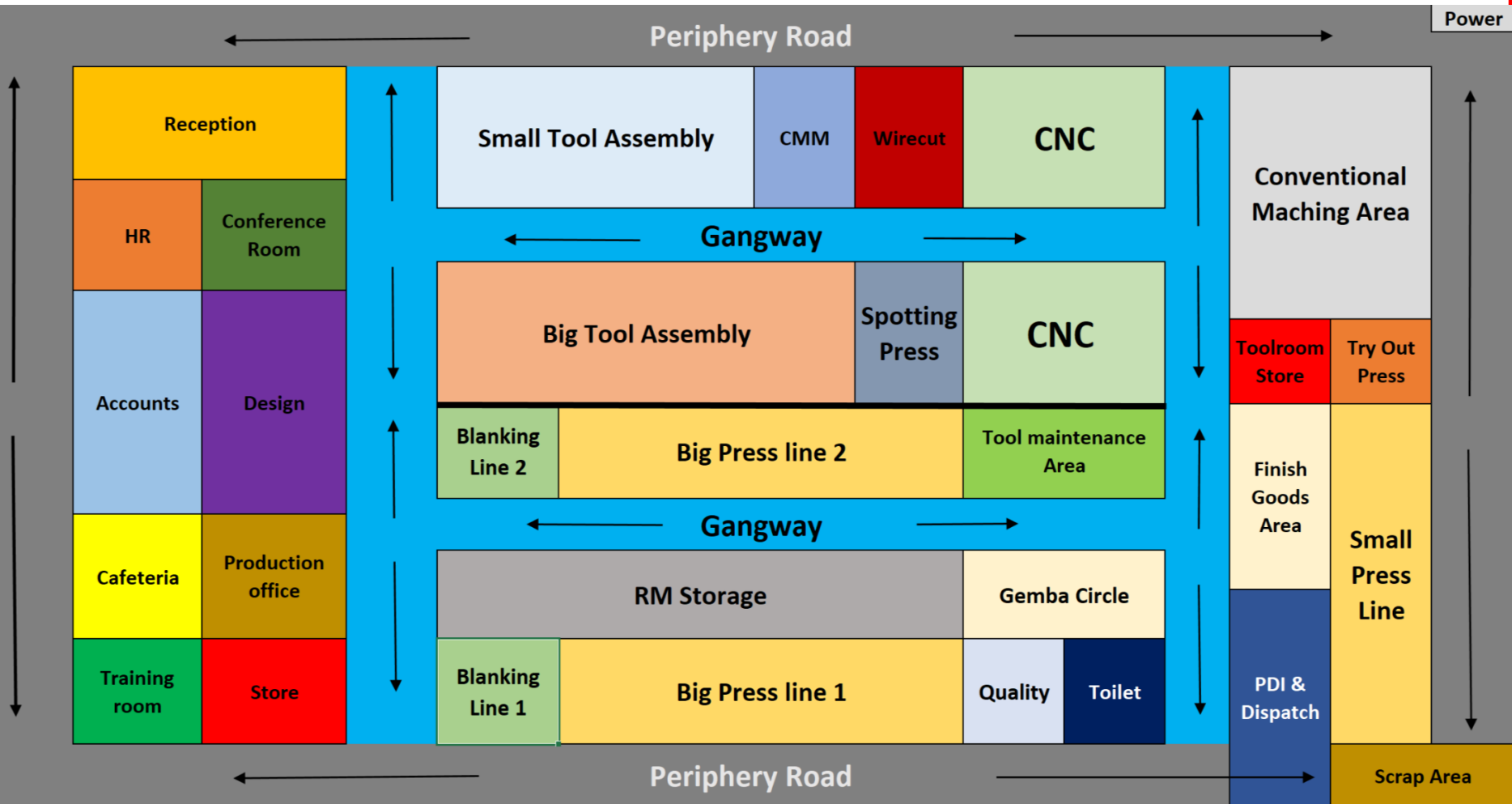


Tooling/CNC Line



Tool Assembly

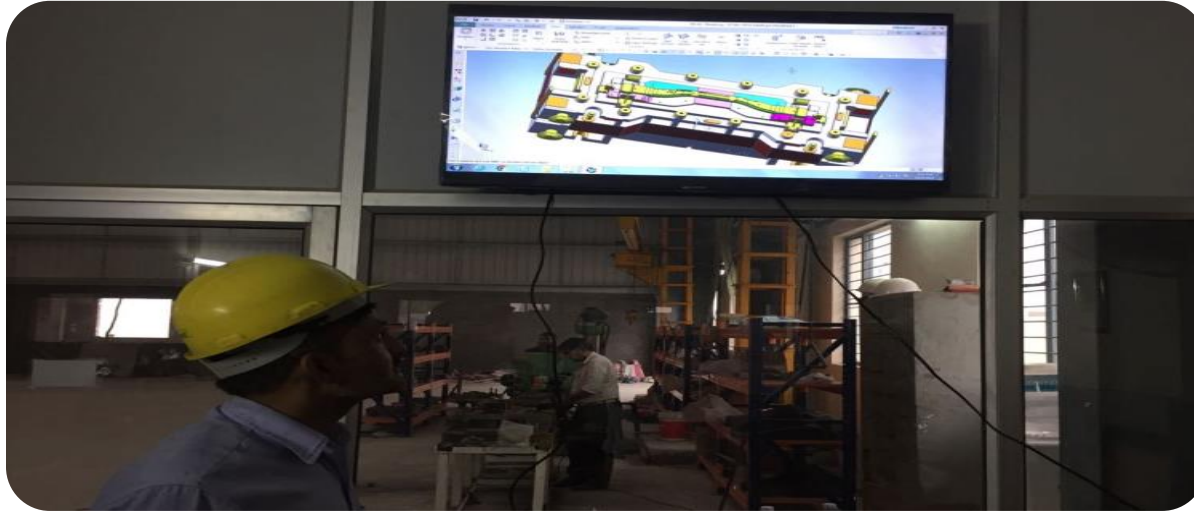
Plant Layout



Toolroom Capabilities

• VMC (03 No's)	BFW
• VMC (01 No's)	Haas
• Spotting Press(01 No's)	Reis(German)
• Wirecut(01 No's)	Accurate
• CMM(01 No's)	Accurate
• Simulation Software(01 No's)	Altair Hyperform
• 3D modelling Software(03 No's)	UNIGRAPHICS
• 2D modelling Software(04 No's)	AutoCAD
• CAM Programming	DelCAM 6.0

Digitalized Toolroom



3 Stage Simulation for higher accuracy in work

LED screens to display status of each ongoing project.

Each machine is equipped with accuracy meters

Display of 3D design in assembly area to facilitate easier assembly for workforce

Wi-Fi based transfer of NC and other data.

Design Facility



Sheet Metal Forming Simulation : 01 seat



Unigraphics NX7.5 (3D Modeling) : 3 Seats



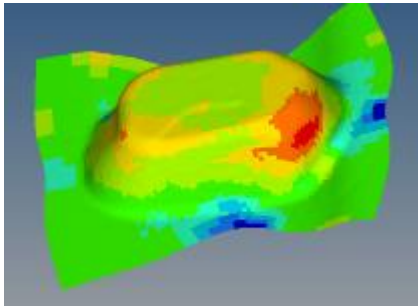
AutoCAD 2010 (2D Drafting) : 04 seats



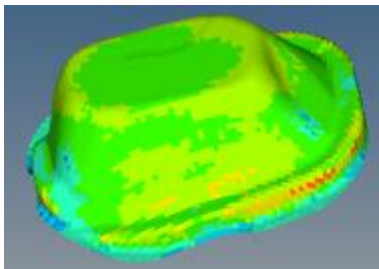
Delcam 6.0 (CAM Programming) : 01 seat

Simulation Facilities

Simulation head lamp (AZ)



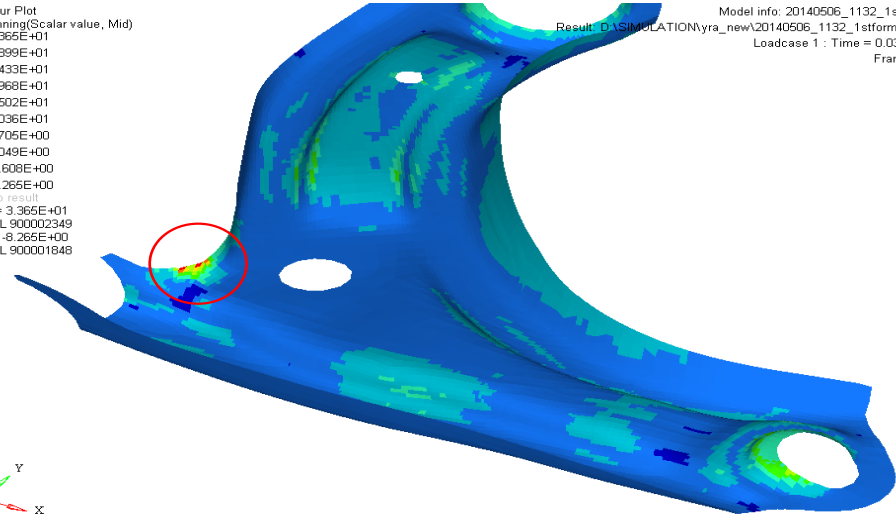
1st DRAW DIE FACE SIMULATION



2nd DRAW DIE FACE SIMULATION

1st forming Simulation result of yra control arm

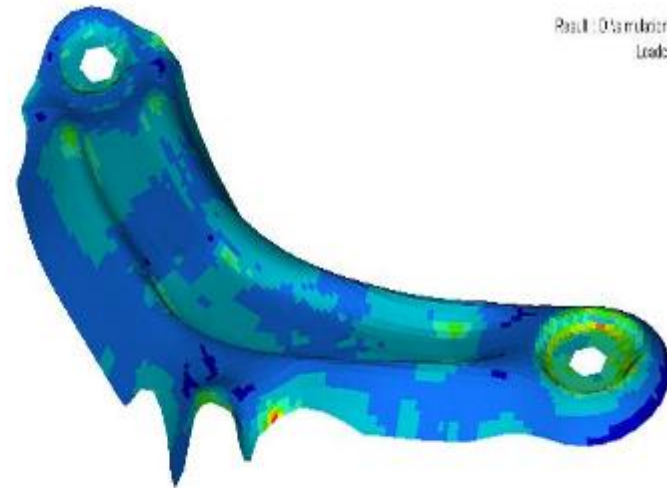
Contour Plot
%Thinning(Scalar value, Mid)
3.365E+01
2.899E+01
2.433E+01
1.968E+01
1.502E+01
1.036E+01
5.705E+00
1.049E+00
-3.608E+00
-8.265E+00
No result
Max = 3.365E+01
SHELL 900002349
Min = -8.265E+00
SHELL 900001848



Model info: 20140506_1132_1stform
Result: D:\SIMULATION\yra_new\20140506_1132_1stform\A011
Loadcase 1: Time = 0.030900
Frame 11



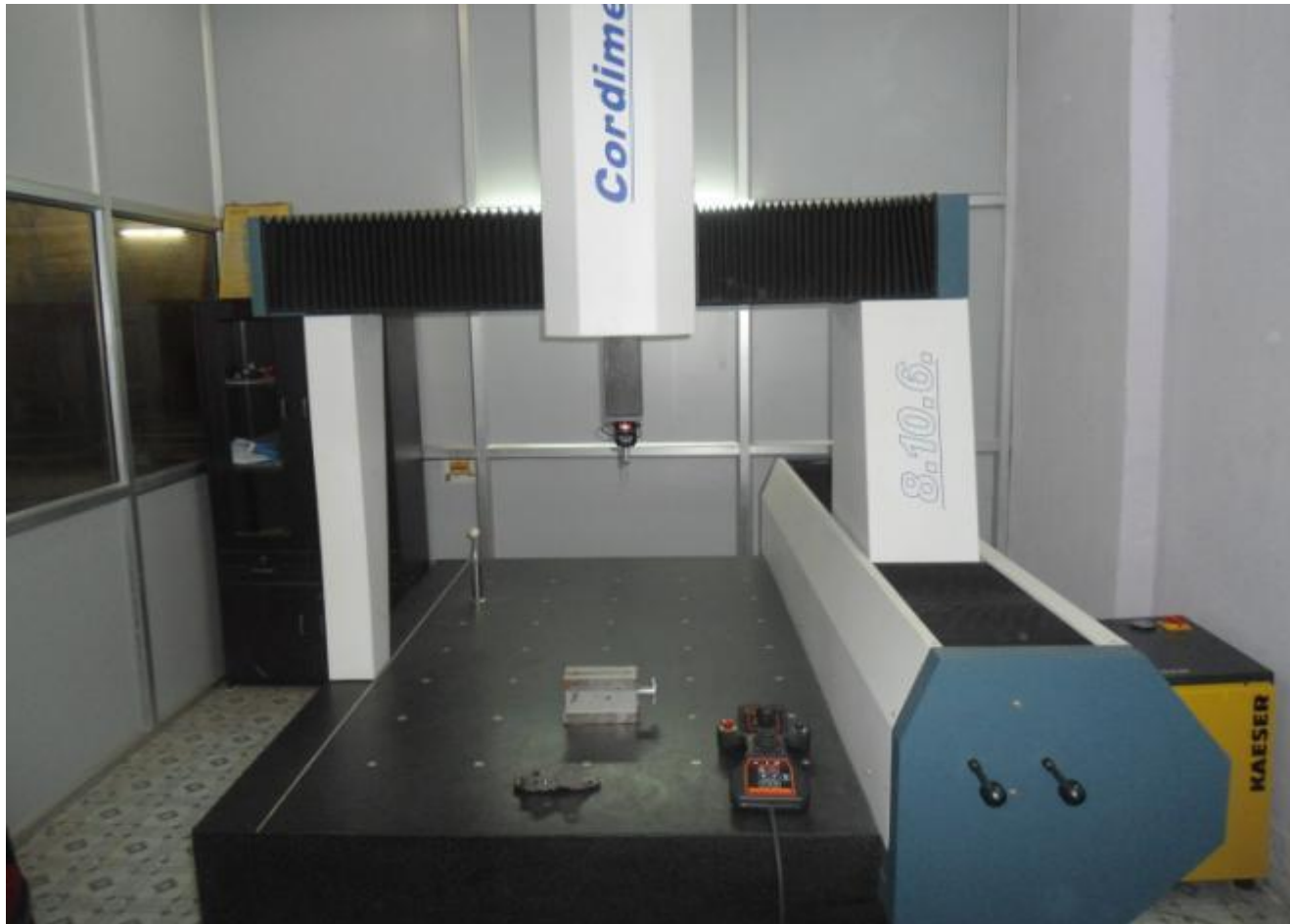
Contour Plot
%Thinning(Scalar value, Mid)
1.915E+01
1.646E+01
1.372E+01
1.099E+01
8.265E+00
5.521E+00
2.787E+00
5.280E+00
-2.682E+00
-5.416E+00
No result
Max = 1.915E+01
SHELL 901214194
Min = -5.416E+00
SHELL 901214573



Result: D:\simulation\SAW
Loadcase 1



Coordinate Layout Machine



Coordinate Layout Machine

2000mm Lengthx1200mm Width x1000mm Height

WIRECUT



EDM Wire Cut

Electronica

Bed Size: 400mm*400mm*250mm

Cutting Speed: 50mm²/min

CNCs



BFW

Bed Size: 1200mm*600mm*600mm
Spindle Speed: 160-10000 rpm



BFW

Bed Size: 1800mm*800mm*800mm
Spindle Speed: 160-8000 rpm



BFW

Bed Size: 3200mm*2200mm*750mm
Spindle Speed: 160-6000 rpm

Spotting Press



200 Tonne Reis Spotting Press(German)

Bed Size: 2500mm by 1800mm

Production Capabilities

• Press 600T (01 No's)	Spiertz(France)
• Press 500T (02 No's)	Isgec & Yangli
• Press 400T (01 No's)	ERFURT
• Power Press 250T (04 No's)	Isgec & Yangli
• Power Press 200T (02 No's)	Taiwan Press
• Power Press 160T (05 No's)	Isgec & Yangli
• Power Press 110T (06 No's)	Isgec & Yangli
• Power Press 63T (04 No's)	Isgec & Yangli
• Blanking Press with Pneumatic Feeder (2 No's)	Hertz automatic systems

Blanking Press Line



Big Press Line



ISGEC 500T



SPIERTZ 600T



ERFURT 400T



YANGLI 500T

Small Press Line(Plant 2)



Performance Toolroom

With continual hard work and unmatched commitment NDT Team has put in a lot of efforts towards the Toolroom and the results are a clear indication of the performance.

Within last 8 months we have worked upon more than 10 Major projects with more than 4 clients. We have delivered around tools for 150 parts, which amounts to around 710 tools in 240 days, averaging out at around 3 tools per day.

Performance Production

With utmost dedication and hard work NDT Production Team has put in a lot of efforts and the results are a clear indication of the performance.

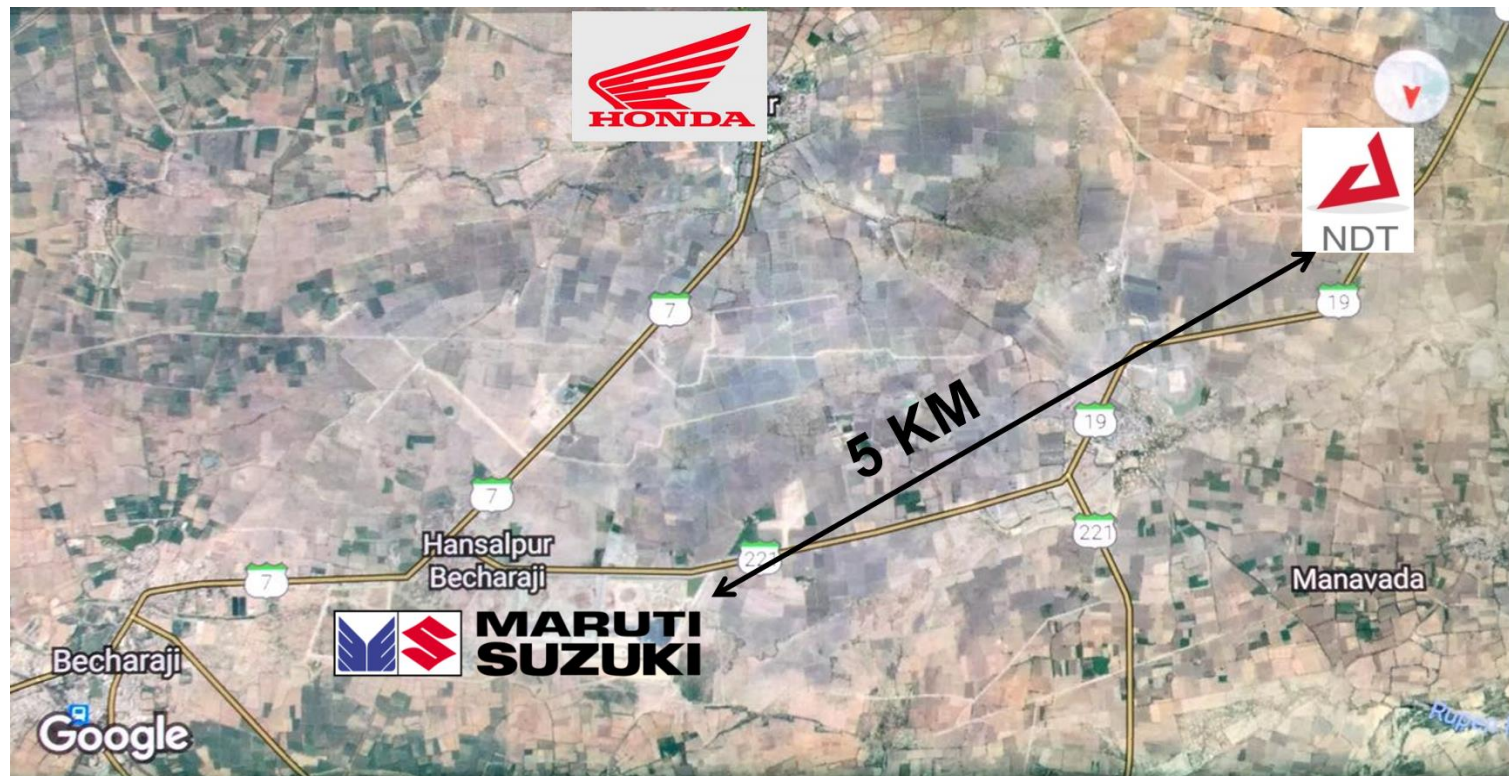
Within last 1 year we have worked upon more than **3 Major VAVE projects** and delivered a saving of **20 crores** to our customers. A new big Press line(500T & above) is ready to further strengthen our sales numbers and capabilities.

Our Team



Expansion in Gujarat

NDT to has always tried to keep up with the industry. With expansion of automotive giants in Gujarat , NDT has also setup a unit in Gujarat. The plant is under construction and will be operational by the Jan 2018. The unit would be headed by Mr. Deepak Dalal (B.E Mechanical).





...Thank you



Contact us

Navdeep Tools Pvt Ltd., Plot no. 787, Sec-69, IMT Faridabad

Mr. V.P Dalal(M.D)

Vpdalal@ndtools.com

9899582840

Mr. Naveen Dalal(Director)

navin@ndtools.com

9650509469